

*Grapevine –  
Colleyville  
Independent  
School  
District*



# Demographic Update

August 2015

*Learn from Yesterday...  
Understand Today...  
Plan for Tomorrow*



TEMPLETON  
DEMOGRAPHICS

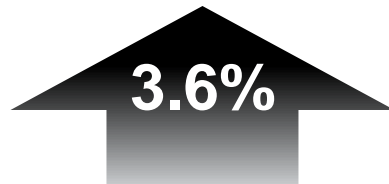
# Economic Conditions – DFW MSA (June 2015)



DFW MSA  
Unemployment Rate



- U.S. 5.5%
- Texas 4.4%
- Tarrant County 4.1%
- Grapevine 3.2%



Job Growth  
DFW MSA

- 117,800 new jobs created
- More than double the national rate of 1.7%



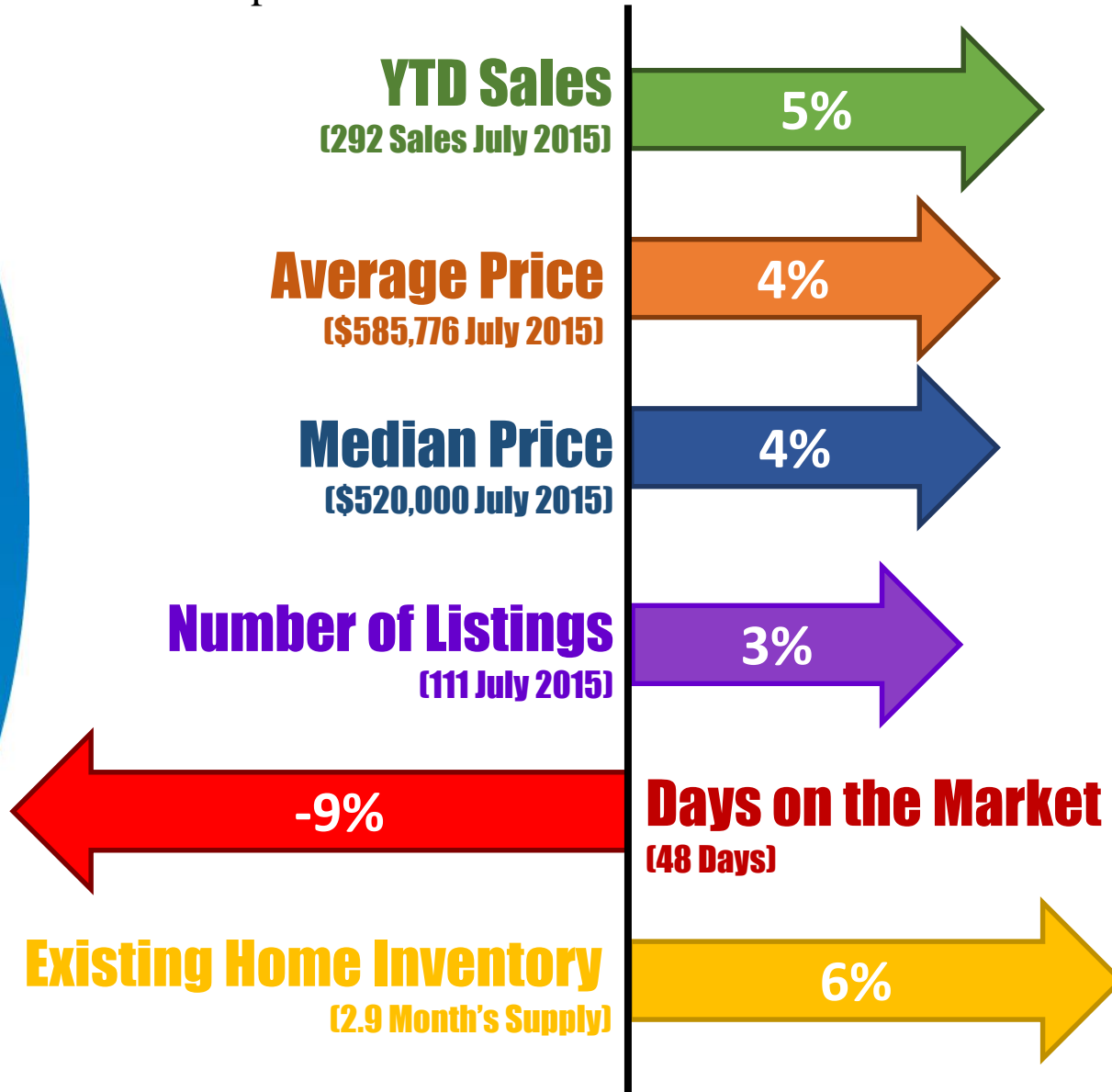
Annual SF Starts  
DFW MSA

- 1,484 more than previous year over year



# Colleyville Housing Markets

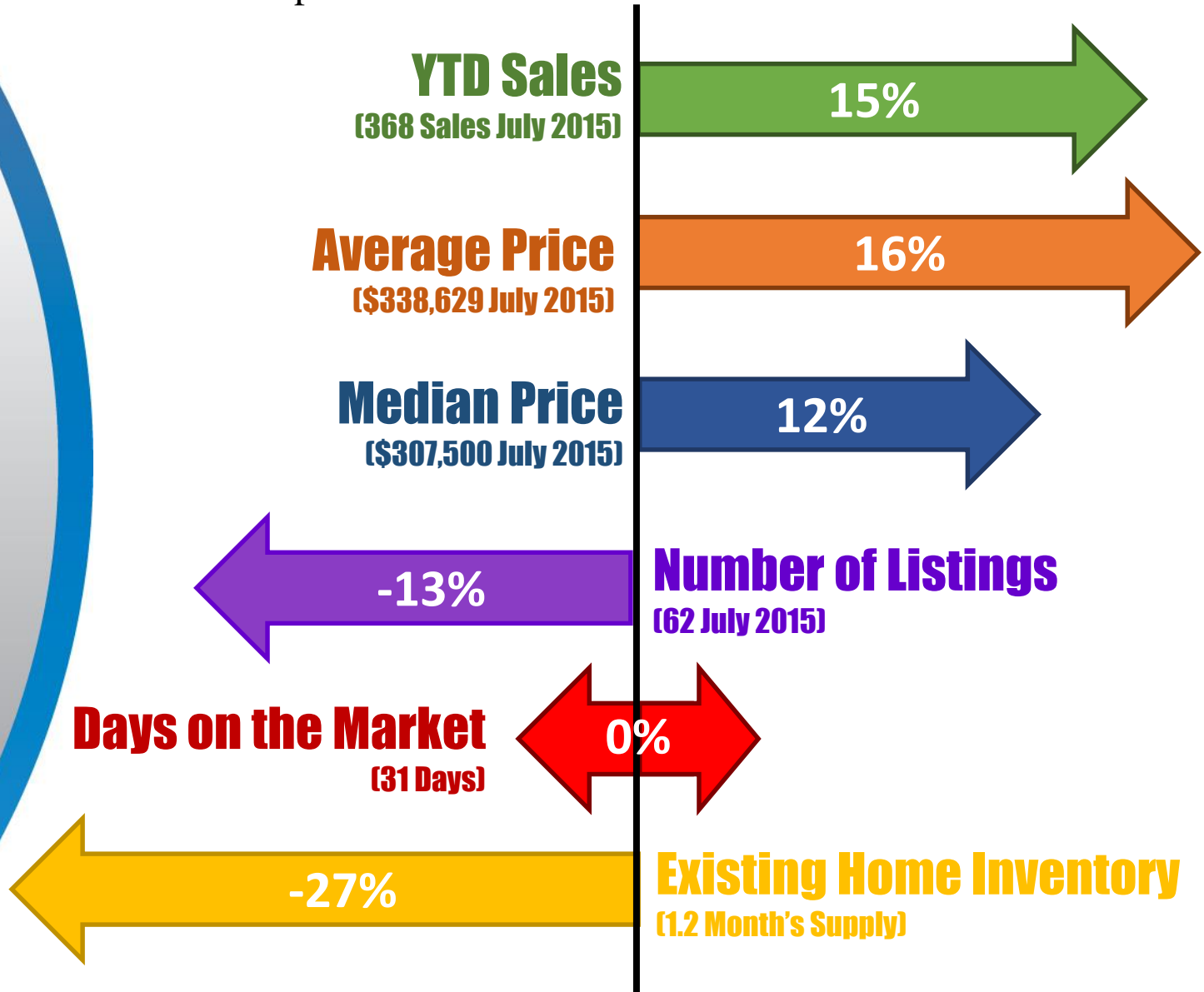
Year Over Year Comparisons





# Grapevine Housing Markets

Year Over Year Comparisons





# DFW New Home Ranking Report

## ISD Ranked by Annual Closings – 2Q15

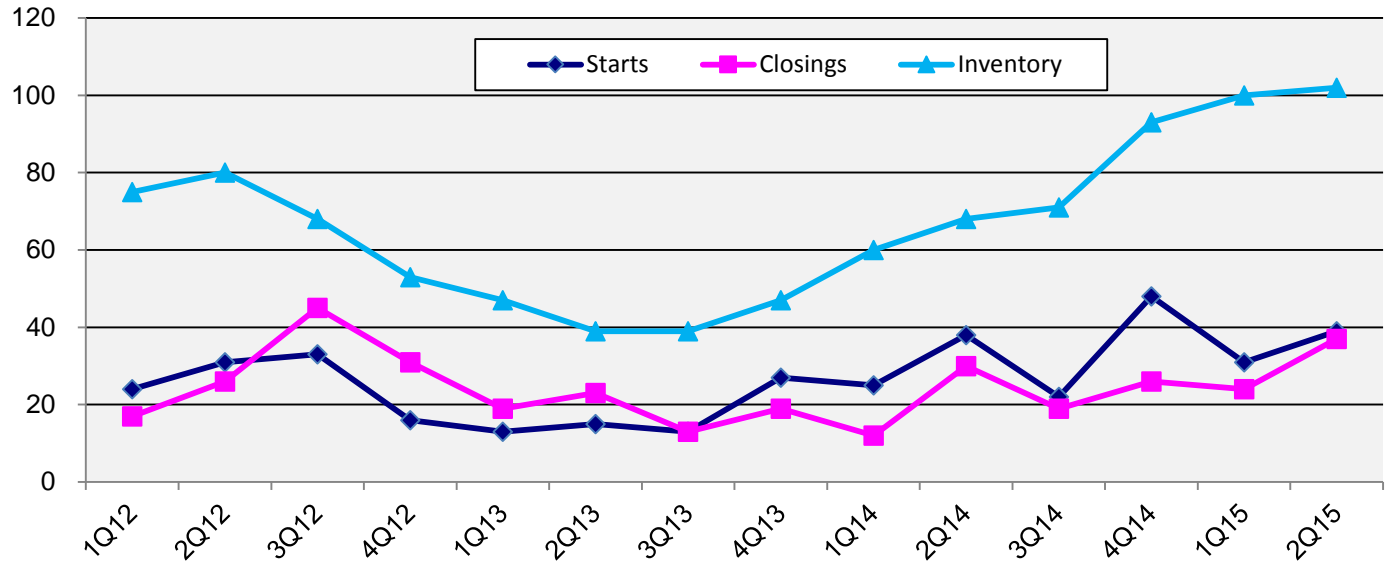
Rank	District Name	Annual Starts	Annual Closings	VDL	Future
1	Frisco ISD	2,728	2,660	3,589	8,135
2	Denton ISD	1,707	1,783	2,375	16,233
3	Prosper ISD	1,405	1,298	2,796	27,990
4	Northwest ISD	1,136	1,179	1,710	22,929
5	Keller ISD	989	978	1,159	2,448
6	Lewisville ISD	1,026	913	2,503	2,980
7	Dallas ISD	1,024	902	2,311	5,828
8	Eagle Mtn. - Saginaw ISD	868	807	1,435	19,839
9	Rockwall ISD	663	661	1,799	7,939
10	Little Elm ISD	806	621	1,744	5,044
11	Allen ISD	471	605	920	1,305
12	McKinney ISD	481	559	1,343	6,229
13	Crowley ISD	530	533	1,372	8,674
14	Mansfield ISD	533	508	1,161	5,359
15	Forney ISD	469	502	804	12,500
16	Plano ISD	454	429	1,028	2,364
17	Garland ISD	357	412	825	3,390
18	Midlothian ISD	427	397	1,102	20,525
19	HEB ISD	430	391	555	5,003
20	Burleson ISD	387	377	591	3,770

42	Red Oak ISD	145	133	327	3,083
<b>43</b>	<b>Grapevine-Colleyville ISD</b>	<b>140</b>	<b>106</b>	<b>369</b>	<b>413</b>
44	Birdville ISD	79	102	129	813



# New Housing Activity

## Grapevine-Colleyville ISD Housing Activity



Starts	2012	2013	2014	2015
1Q	24	13	25	31
2Q	31	15	38	39
3Q	33	13	22	
4Q	16	27	48	
Total	104	68	133	70

Closings	2012	2013	2014	2015
1Q	17	19	12	24
2Q	26	23	30	37
3Q	45	13	19	
4Q	31	19	26	
Total	119	74	87	61

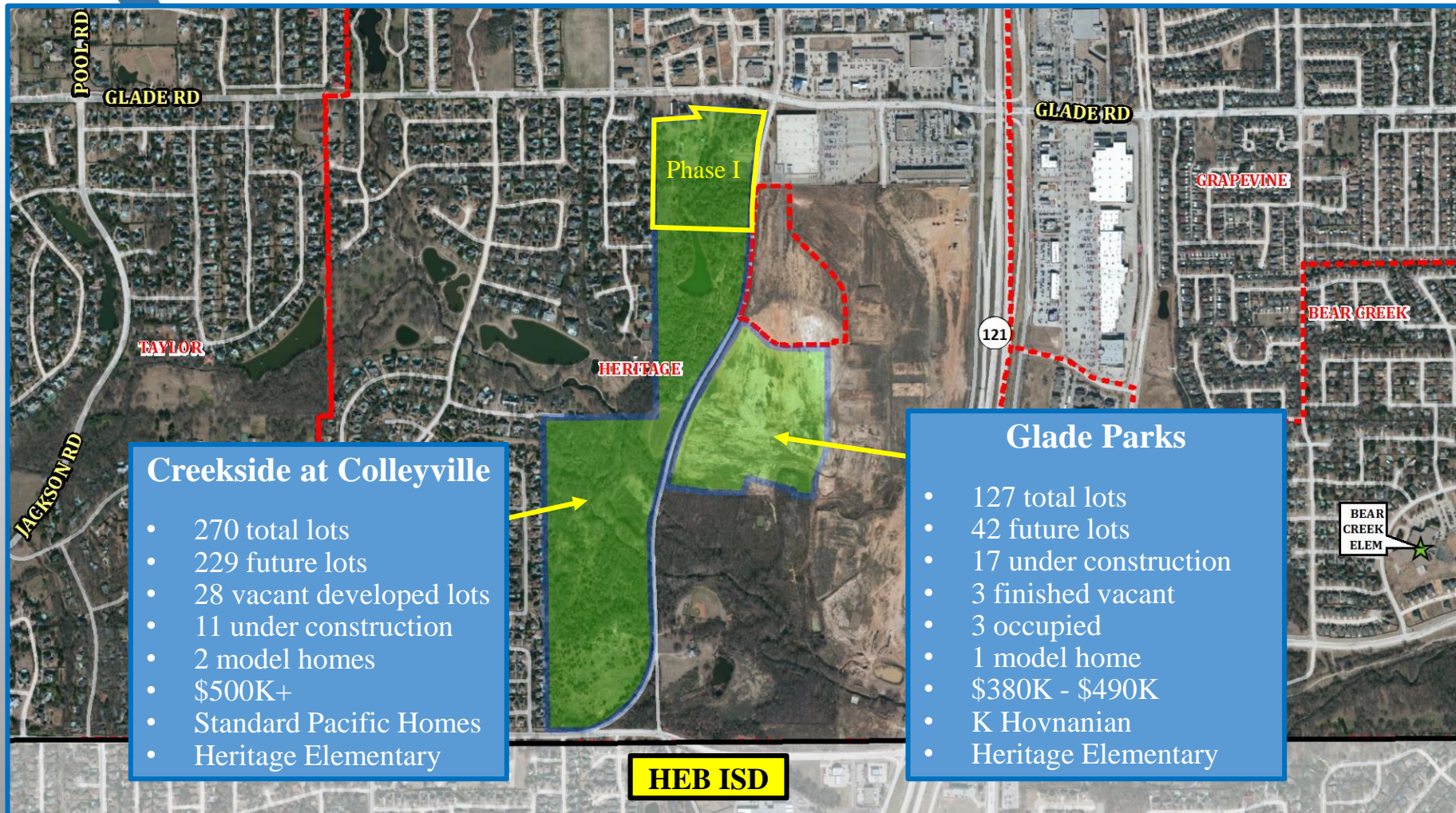
- 2014 new home starts nearly doubled from 2013
- 2015 new home starts and closings are both on pace to beat 2014 totals
- Year to date closings are also up almost 45% over the same period last year
- Inventory remains in a good position to sustain the current closing rate





# Active Subdivision

## Creekside at Colleyville and Glade Parks



**Creekside at Colleyville**

- 270 total lots
- 229 future lots
- 28 vacant developed lots
- 11 under construction
- 2 model homes
- \$500K+
- Standard Pacific Homes
- Heritage Elementary

**HEB ISD**

**Glade Parks**

- 127 total lots
- 42 future lots
- 17 under construction
- 3 finished vacant
- 3 occupied
- 1 model home
- \$380K - \$490K
- K Hovnanian
- Heritage Elementary







# Active Subdivision

Lake Pointe



## Lake Pointe

- 64 total lots
- 22 vacant developed lots
- 20 occupied
- 22 under construction
- Closing remaining lots in 2015
- \$560K - \$850K
- K Hovnanian
- Silver Lake Elementary

SILVER LAKE ELEM







# Active Subdivision

Overlook at Colleyville



**Overlook at Colleyville**

- 73 total lots
- 2 occupied
- 51 vacant developed lots
- 19 under construction
- 1 model
- \$639K - \$755K
- Toll Brothers
- Colleyville Elementary







# Active Subdivision

Vineyard Creek Estates

## Vineyard Creek Estates

- 49 total lots
- 9 occupied
- 12 under construction
- 24 vacant developed lots
- 3 finished vacant
- 1 model home
- \$460K - \$528K
- Emerald Homes (DR Horton)
- Grapevine Elementary







# Active Subdivisions

## Stone Bridge Oaks and Glade Hill



- ### Stone Bridge Oaks
- 66 total lots
  - 21 Townhomes (all complete)
  - 9 vacant developed lots
  - 47 occupied
  - 8 under construction
  - 2 finished vacant
  - Upper \$300s
  - Grenadier Homes
  - Grapevine Elementary

- ### Glade Hill
- 68 total lots
  - 11 under construction
  - 53 vacant developed lots
  - 3 finished vacant lots
  - 1 model home
  - \$430K+
  - Darling Homes
  - Grapevine Elementary







# Active Subdivision

## Gateway Court



### Gateway Court

- 28 total lots
- 6 occupied
- 12 vacant developed lots
- 2 under construction
- 6 finished vacant
- 2 model homes
- \$390K - \$490K
- Bloomfield Homes
- Grapevine Elementary







# Active Subdivision

Preservation



**Preservation**

- 40 total lots
- 28 vacant developed lots
- 11 under construction
- 1 model home
- K Hovnanian
- Gated community
- Bransford Elementary







# Active Multi-family

## The Gatehouse





# Enrollment History

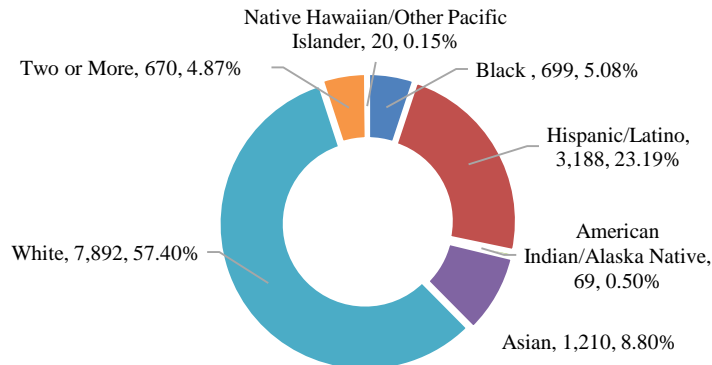
Year (Oct.)	EE/Pre-K	K	1st	2nd	3rd	4th	5th	6th	7th	8th	9th	10th	11th	12th	Total	Absolute Growth	Percent Growth
2010/11	244	852	896	996	960	939	997	1,039	1,138	1,139	1,116	1,165	1,128	1,061	13,670		
2011/12	244	849	895	920	1,021	993	959	995	1,058	1,125	1,183	1,059	1,114	1,095	13,510	-160	-1.17%
2012/13	225	849	885	928	939	1,050	1,008	984	999	1,079	1,181	1,147	1,016	1,098	13,388	-122	-0.90%
2013/14	217	864	905	905	947	974	1,099	1,036	1,022	1,019	1,150	1,154	1,117	1,006	13,415	27	0.20%
2014/15	235	888	914	947	960	969	1,006	1,105	1,036	1,034	1,071	1,134	1,104	1,099	13,502	87	0.65%

\*Yellow box = largest grade per year  
 \*Green box = second largest grade per year  
 \*\*Does not include iUniversity Enrollment

## Student Race/Ethnicity and Economically Disadvantaged

Year (Oct.)	Total	Black or African American	% Black or African American	Hispanic	% Hispanic	American Indian or Alaska Native	% American Indian or Alaska Native	Asian	% Asian	White	% White	Two or more races	% Two or More Races	Native Hawaiian/Other Pacific Islander	% Native Hawaiian/Other Pacific Islander
2010/11	13,670	570	4.2%	2,707	19.8%	113	0.8%	1,058	7.7%	8,774	64.2%	423	3.1%	25	0.2%
2011/12	13,510	540	4.0%	2,784	20.6%	102	0.8%	1,080	8.0%	8,569	63.4%	411	3.0%	24	0.2%
2012/13	13,388	592	4.4%	2,850	21.3%	105	0.8%	1,136	8.5%	8,275	61.8%	405	3.0%	25	0.2%
2013/14	13,523	593	4.4%	3,089	22.8%	68	0.5%	1,168	8.6%	7,984	59.0%	602	4.5%	19	0.1%
2014/15	13,748	699	5.1%	3,188	23.2%	69	0.5%	1,210	8.8%	7,892	57.4%	670	4.9%	20	0.1%

### 2014-15 STUDENT RACE/ETHNICITY TOTALS



Year (Oct.)	Economically Disadvantaged	% ED
2010/11	2,726	19.9%
2011/12	2,915	21.6%
2012/13	2,957	22.1%
2013/14	3,031	22.4%
2014/15	3,045	22.1%



# Ten Year Forecast

## By Grade Level

Year (Oct.)	EE/Pre-K	K	1st	2nd	3rd	4th	5th	6th	7th	8th	9th	10th	11th	12th	Total	Absolute Growth	Percent Growth
2010/11	244	852	896	996	960	939	997	1,039	1,138	1,139	1,116	1,165	1,128	1,061	13,670		
2011/12	244	849	895	920	1,021	993	959	995	1,058	1,125	1,183	1,059	1,114	1,095	13,510	-160	-1.17%
2012/13	225	849	885	928	939	1,050	1,008	984	999	1,079	1,181	1,147	1,016	1,098	13,388	-122	-0.90%
2013/14	217	864	905	905	947	974	1,099	1,036	1,022	1,019	1,150	1,154	1,117	1,006	13,415	27	0.20%
2014/15	235	888	914	947	960	969	1,006	1,105	1,036	1,034	1,071	1,134	1,104	1,099	13,502	87	0.65%
2015/16	235	906	936	948	971	979	1,005	1,045	1,122	1,056	1,096	1,065	1,093	1,089	13,546	44	0.33%
2016/17	235	942	951	954	971	997	1,000	1,054	1,069	1,137	1,121	1,086	1,034	1,077	13,628	82	0.61%
2017/18	235	946	1,000	960	987	1,004	1,027	1,043	1,084	1,084	1,200	1,103	1,046	1,018	13,737	109	0.80%
2018/19	235	950	991	1,021	974	1,016	1,028	1,060	1,058	1,107	1,150	1,192	1,066	1,026	13,874	137	1.00%
2019/20	235	957	999	995	1,029	982	1,036	1,054	1,080	1,059	1,185	1,133	1,149	1,048	13,941	67	0.48%
2020/21	235	956	997	1,005	1,003	1,047	1,010	1,073	1,061	1,075	1,138	1,156	1,093	1,128	13,977	36	0.26%
2021/22	235	952	994	1,012	1,009	1,023	1,062	1,027	1,099	1,065	1,154	1,116	1,115	1,073	13,936	-41	-0.29%
2022/23	235	959	997	1,008	1,022	1,027	1,046	1,087	1,045	1,101	1,144	1,135	1,076	1,091	13,973	37	0.27%
2023/24	235	955	1,001	1,009	1,018	1,032	1,051	1,072	1,104	1,046	1,179	1,122	1,095	1,057	13,976	3	0.02%
2024/25	235	966	993	1,015	1,020	1,034	1,051	1,075	1,093	1,106	1,125	1,158	1,082	1,074	14,027	51	0.36%

\*Yellow box = largest grade per year

\*Green box = second largest grade per year

\*\*Enrollment projections do NOT include iUniversity Prep Enrollment

- Grapevine-Colleyville ISD may reach more than 13,600 students by 2016
- 5 year growth = 439 students
- 2019/20 enrollment = 13,941 students
- 10 year growth = 525 students
- 2024/25 enrollment = 14,027 students



# Ten Year Forecast

## By Campus

Campus Name	HISTORY	Current	ENROLLMENT PROJECTIONS									
	2013/14	2014/15	2015/16	2016/17	2017/18	2018/19	2019/20	2020/21	2021/22	2022/23	2023/24	2024/25
Bear Creek Elementary	748	765	768	748	750	762	773	761	764	764	769	765
Bransford Elementary	427	425	426	431	436	439	424	432	432	426	439	435
Cannon Elementary	468	523	555	580	604	619	641	640	645	642	650	668
Colleyville Elementary	496	475	455	460	458	473	484	488	496	493	493	498
Dove Elementary	595	546	547	538	526	528	512	515	518	522	525	531
Glenhope Elementary	473	454	450	456	452	454	457	460	456	458	461	459
Grapevine Elementary	511	531	541	551	579	594	594	594	593	598	584	589
Heritage Elementary	467	454	471	487	509	538	538	544	544	547	545	548
Silver Lake Elementary	567	589	597	604	615	555	555	557	567	567	566	566
Taylor Elementary	432	450	452	443	455	452	452	440	456	456	457	453
Timberline Elementary	727	707	718	752	775	782	803	822	816	821	812	802
<b>ELEMENTARY SCHOOL TOTALS</b>	<b>5,911</b>	<b>5,919</b>	<b>5,980</b>	<b>6,050</b>	<b>6,159</b>	<b>6,196</b>	<b>6,233</b>	<b>6,253</b>	<b>6,287</b>	<b>6,294</b>	<b>6,301</b>	<b>6,314</b>
Elementary Absolute Growth	27	8	61	70	109	37	37	20	34	7	7	13
Elementary Percent Growth	0.46%	0.14%	1.03%	1.17%	1.80%	0.60%	0.60%	0.32%	0.54%	0.11%	0.11%	0.21%
Colleyville Middle School	677	725	723	741	728	702	698	677	674	666	648	667
Cross Timbers Middle School	777	795	813	784	783	764	766	756	783	826	830	840
Grapevine Middle School	732	733	763	785	790	850	852	863	818	817	822	827
Heritage Middle School	891	922	924	950	910	909	877	913	916	924	922	940
<b>MIDDLE SCHOOL TOTALS</b>	<b>3,077</b>	<b>3,175</b>	<b>3,223</b>	<b>3,260</b>	<b>3,211</b>	<b>3,225</b>	<b>3,193</b>	<b>3,209</b>	<b>3,191</b>	<b>3,233</b>	<b>3,222</b>	<b>3,274</b>
Middle School Absolute Growth	15	98	48	37	-49	14	-32	16	-18	42	-11	52
Middle School Percent Growth	0.49%	3.18%	1.51%	1.15%	-1.50%	0.44%	-0.99%	0.50%	-0.56%	1.32%	-0.34%	1.61%
Grapevine High School	2,098	2,015	1,923	1,829	1,800	1,840	1,868	1,883	1,884	1,861	1,878	1,875
Colleyville Heritage High School	2,258	2,222	2,152	2,119	2,112	2,137	2,189	2,167	2,119	2,130	2,120	2,109
<b>HIGH SCHOOL TOTALS</b>	<b>4,356</b>	<b>4,237</b>	<b>4,075</b>	<b>3,948</b>	<b>3,912</b>	<b>3,977</b>	<b>4,057</b>	<b>4,050</b>	<b>4,003</b>	<b>3,991</b>	<b>3,998</b>	<b>3,984</b>
High School Absolute Growth	-31	-119	-162	-127	-36	65	80	-7	-47	-12	7	-14
High School Percent Growth	-0.71%	-2.73%	-3.82%	-3.12%	-0.91%	1.66%	2.01%	-0.17%	-1.16%	-0.30%	0.18%	-0.35%
GCISD Collegiate Academy	0	113	210	312	397	399	400	407	397	397	397	397
The Bridges Academy	71	58	58	58	58	58	58	58	58	58	58	58
iUniversity Prep	108	246	262	275	282	283	287	288	286	287	287	287
<b>ALTERNATIVE SCHOOL TOTALS</b>	<b>179</b>	<b>417</b>	<b>530</b>	<b>645</b>	<b>737</b>	<b>740</b>	<b>745</b>	<b>753</b>	<b>741</b>	<b>742</b>	<b>742</b>	<b>742</b>
<b>DISTRICT TOTAL</b>	<b>13,523</b>	<b>13,748</b>	<b>13,808</b>	<b>13,903</b>	<b>14,019</b>	<b>14,138</b>	<b>14,228</b>	<b>14,265</b>	<b>14,222</b>	<b>14,260</b>	<b>14,263</b>	<b>14,314</b>
District Absolute Growth	135	225	60	95	116	119	90	37	-43	38	3	51
District Percent Growth	1.0%	1.7%	0.4%	0.7%	0.8%	0.8%	0.6%	0.3%	-0.3%	0.3%	0.0%	0.4%



# Summary

- DFW will continue to be a leader in job and population growth due to the strong housing market and its diverse economy.
- Regeneration continues in several areas of the GCISD.
- Open enrollment may continue to add students to the district.
- 5 Elementary zones have new residential activity, with most of the growth occurring within Heritage and Grapevine Elementary zones.
- Year to date, new home closings in GCISD are up 45% compared to the same period last year.
- Second quarter new home closings are up 23% over second quarter 2014.
- Grapevine-Colleyville ISD is expected to add approximately 440 students in the next 5 years.
- 2019/20 Enrollment Projection: 13,941
- GCISD is expected to have more than 14,000 students for the 2024/25 school year