



GRAPEVINE – COLLEYVILLE ISD 2016 BOND & TIF PROJECT UPDATE

April 27, 2020

Huckabee
MORE THAN ARCHITECTS

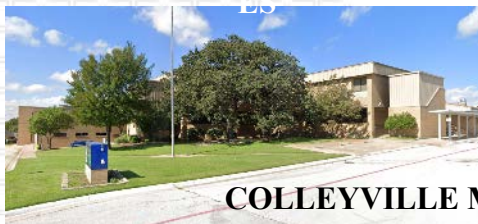


SUMMER 2019 RENOVATIONS

Huckabee
MORE THAN ARCHITECTS

SUMMER 2019 RENOVATIONS

BRIEF RECAP!



- + GHS – Gym flooring material has arrived and needs two weeks to acclimate before installation
- + GHS – Stage floor install to begin May 4th
- + GHS – Existing Administration area will be complete in the next two weeks
- + GES – Lacking paint touch-up and technology rack is being terminated next week
- + GES – The last retaining wall to be built will be complete this week. Final grading has started and sidewalks will be poured in the next two weeks

GRAPEVINE HIGH SCHOOL

CONTROLLED VESTIBULE + ADMIN DEMO



Huckabee

GRAPEVINE HIGH SCHOOL

INSTALLATION OF NEW SMOKE VENTS OVER STAGE



Huckabee

GRAPEVINE HIGH SCHOOL

GYM 1 EXISTING FLOORING REMOVAL



Huckabee

GRAPEVINE HIGH SCHOOL

GYM 1 NEW WOOD FLOORING & PREP



Huckabee

GRAPEVINE ELEMENTARY SCHOOL

NEW CLASSROOMS + INTERIOR FINISHES



Huckabee

GRAPEVINE ELEMENTARY SCHOOL

NEW CLASSROOMS + INTERIOR FINISHES



GRAPEVINE ELEMENTARY SCHOOL

NEW CLASSROOM WING + EXTERIOR



Huckabee

GLENHOPE ELEMENTARY SCHOOL

INSULATION + EXTERIOR GYPSUM SHEATHING WORK



Huckabee

SUMMER 2020 RENOVATIONS

BEAR CREEK ES



+ Learning commons

+ Classroom intruder hardware

+ Security kiosks

+ New single user student restrooms

+ Drainage remediation at playfield

+ HVAC upgrades (addition, cafeteria, technology room)

+ Upgrade intercom system - replace headend, add exterior speakers

+ New dishwasher

BEAR CREEK ELEMENTARY

LEARNING COMMONS + TECH HUB + READING NOOK



Huckabee

BEAR CREEK ELEMENTARY

LEARNING COMMONS + SEATING AREA



Huckabee

BRANSFORD ELEMENTARY



- + Learning commons
- + Classroom intruder hardware
- + Security kiosks
- + New serving line and dishwasher
- + HVAC upgrades at Gym and learning commons
- + Replace intercom system, add exterior speakers

BRANSFORD ELEMENTARY

LEARNING COMMONS + ENTRY + TECH HUB



Huckabee

BRANSFORD ELEMENTARY

LEARNING COMMONS + PRESENTATION + MAKER SPACE



Huckabee

COLLEYVILLE ELEMENTARY



- + Learning commons
- + Classroom intruder hardware
- + Security kiosks
- + Add doors for weather shelter expansion
- + Upgrade intercom system – replace head end, add two additional exterior speakers
- + Add card readers and doorbell at gym doors

COLLEYVILLE ELEMENTARY

LEARNING COMMONS + OPEN SEATING AREA



Huckabee

COLLEYVILLE ELEMENTARY

LEARNING COMMONS + TECH HUB + COLLAB



Huckabee

HERITAGE ELEMENTARY



- + Learning commons
- + Classroom intruder hardware
- + Security kiosks
- + New dishwasher
- + Replace intercom system, add exterior speakers
- + New water heaters (2)
- + HVAC upgrades at library and technology room

HERITAGE ELEMENTARY

LEARNING COMMONS + ENTRY + TECH HUB



Huckabee

HERITAGE ELEMENTARY

LEARNING COMMONS + SEATING + MAKER SPACE



Huckabee

COLLEYVILLE HERITAGE HIGH SCHOOL



- + Learning commons
- + Auditorium sound and lighting updates
- + New walk in freezer/ cooler, new dishwasher
- + New controlled vestibule with kiosks
- + Replace 3 chillers, HVAC upgrades, replace 4 water heaters
- + Refinish gym floor
- + Upgrade intercom system, add exterior speakers
- + Classroom intruder hardware

COLLEYVILLE HERITAGE HIGH SCHOOL

LEARNING COMMONS ENTRY + TECH HUB + COLLAB



COLLEYVILLE HERITAGE HIGH SCHOOL

LEARNING COMMONS + OPEN SEATING



Huckabee

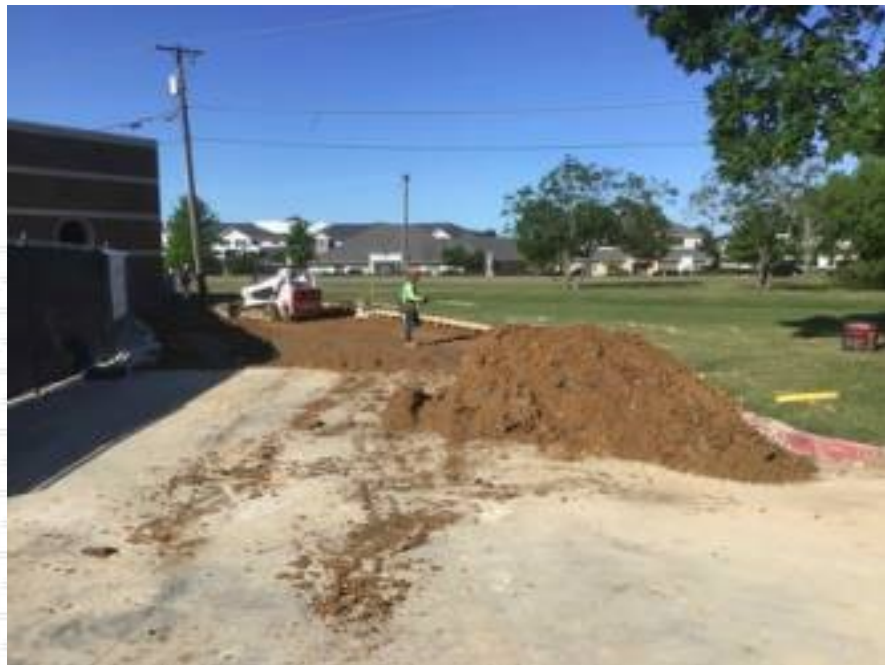
SWIM CENTER

EXTERIOR UTILITY WORK



SWIM CENTER

EXTERIOR UTILITY WORK



SWIM CENTER

INTERIOR WORK



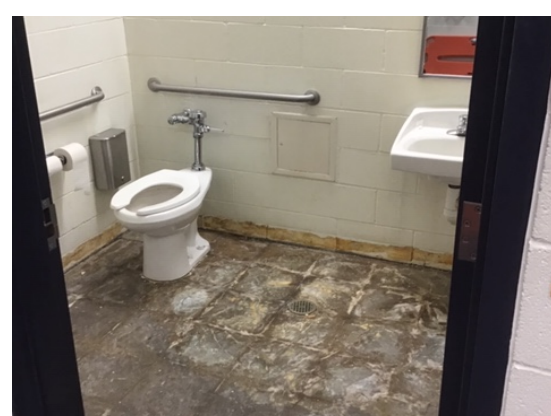
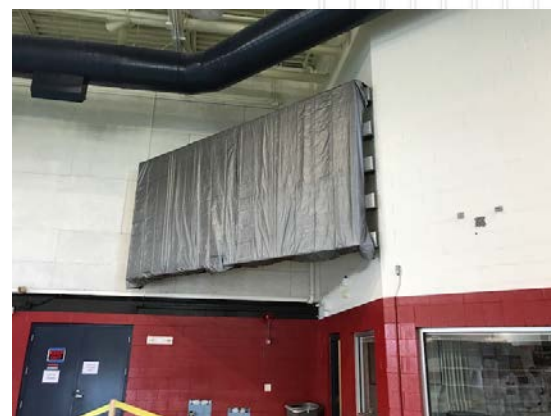
SWIM CENTER

INTERIOR MEP WORK



SWIM CENTER

INTERIOR FLOORING & WALL FINISH DEMOLITION



GCISD PROJECTS

ADMINISTRATION RENOVATION TO REMEDY MOISTURE INTRUSION



Scope:

- + New flooring and subfloor vapor barrier
- + Reconfiguration of offices
- + Dry seal interior and exterior windows and storefront, seal exterior masonry
- + Regrade at foundation and courtyard, waterproofing at slab edge, added drainage

Update:

- + Sawyers has now mobilized and is about 80% complete cleaning the exterior masonry
- + Exterior sealant beginning when everything is cleaned

ADMINISTRATION RENOVATION

EXTERIOR DEMO + DRAINAGE PREP WORK





Huckabee

MORE THAN ARCHITECTS

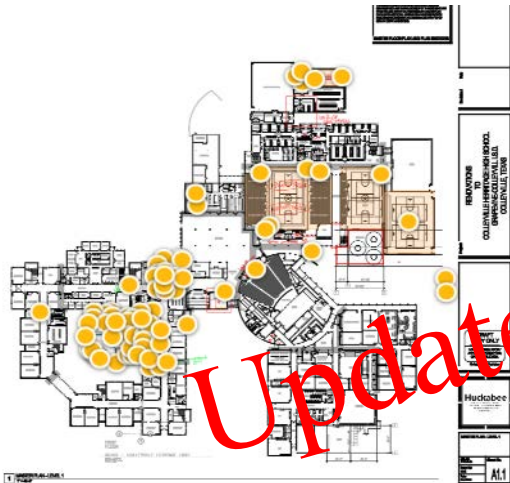
2020 PROJECTS

CTMS CREEK STUDY



+ Phase 2??????????????

2020 PROJECTS



- + Bear Creek ES
- + Bransford ES
- + Colleyville ES
- + Heritage ES
- + Colleyville Heritage HS
- + Swim Center

