

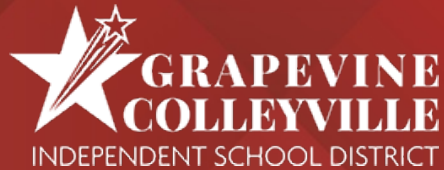


GRAPEVINE – COLLEYVILLE ISD 2016 BOND PROJECT UPDATE

May 23, 2021

Huckabee
MORE THAN ARCHITECTS

2022 Renovations



SYNTHETIC TURF REPLACEMENT

Project Highlights:

+ Scope of work:

- Colleyville Heritage HS – CHHS
 - Turf replacement
 - New goal posts
- Cross Timbers MS – CTMS
 - Turf replacement
 - New goal posts
- Mustang Panther Stadium - MPS
 - Turf replacement
 - New goal posts
 - Add drain at pole vault pit
 - Resurface track

+ Awarded Contractor: Hellas

+ Work began May

- MPS and CHHS
- CTMS (begins June)
- Substantial completion by July 4, 2022



ACCESSIBILITY AT PLAYGROUNDS

Project Highlights:

- + Three schools with civil work (DES, GHES & SLES)
- + Scope of work: address accessibility pathway to playground receiving new equipment
- + Work to start May 30, 2022
- + Work to be completed Summer 2022



FLOORING & PAINTING REPLACEMENT

Project Highlights:

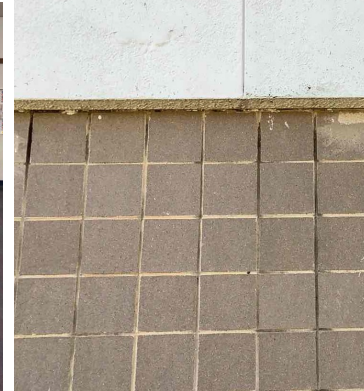
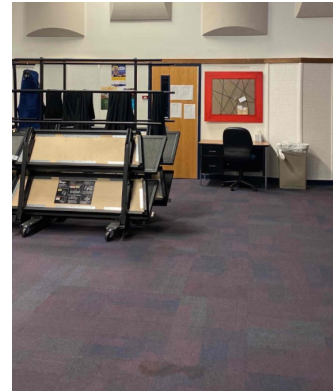
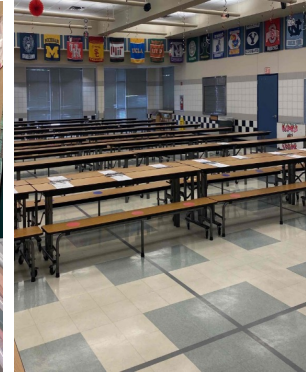
- + 9 campuses
 - BES
 - CES
 - DES
 - GHES
 - OCTES
 - SLES
 - CMS
 - GMS
 - GHS

+ GMP awarded March 28, 2022

+ Work to start May 30th

+ Substantial Completion by August 5; CMS might be the following week(s), but will be usable for start of school

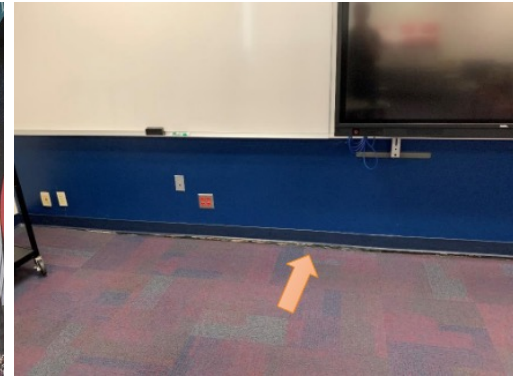
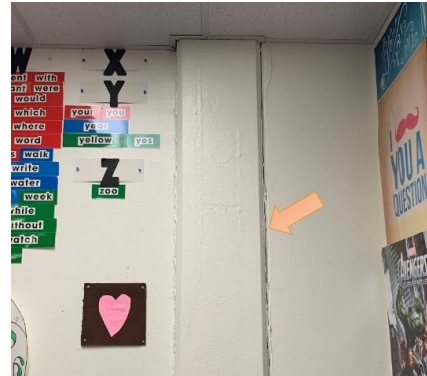
+ Last hard to match carpet ordered



GHS 600-HALL RENOVATION

Project Highlights:

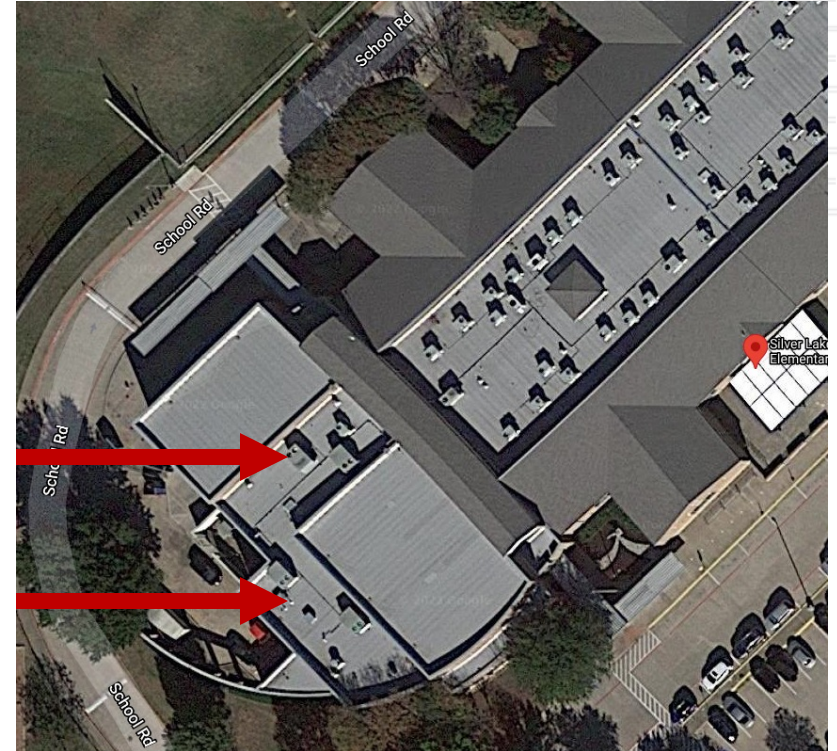
- + Repairs to classrooms in the 600-Hall to address gaps, cracks and level floor
 - Remove top portion of gyp wall in multiple classrooms and install slip track connections to wall framing
 - Add joint sealant at existing column to gyp connections
 - Add urethane injection below slab at multiple classrooms and hallway to raise floor
 - Regrout portions of CMU at rooms 601 and 604
 - Remove door frames and doors and replace with new at rooms 601 and 604
 - Repair delaminating tilt-wall coating (non-structural)
- + GMP awarded March 28, 2022
- + Work to start May30th
- + Substantial completion by August 5



2022 HVAC REPLACEMENT

Project Highlights:

- + Replace identified HVAC rooftop units at 4 campuses
 - CES
 - DES
 - SLES
 - CMS
- + Replace large units (20-ton to 5-ton) based on expected life of current units in priority spaces
 - Example: Gyms, learning commons, cafeteria
- + Work to be completed Summer 2022
 - HVAC Units arrive first week of July
- + Example: Silver Lake ES
 - Three 15-ton units at cafeteria and gym
 - One 10-ton at library





Huckabee

MORE THAN ARCHITECTS