



GRAPEVINE – COLLEYVILLE ISD 2016 BOND PROJECT UPDATE

May 24, 2021

Huckabee
MORE THAN ARCHITECTS

2020 RENOVATIONS



2020 PROJECT RECAP HIGHLIGHTS

BCES, BES, CES, CHHS, HES & SWIM CENTER

Items to complete: CHHS

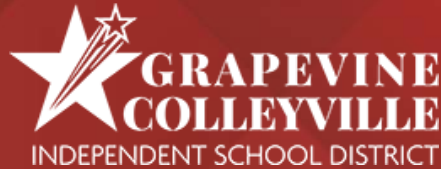
- Colleyville Heritage High School:
- Fire Alarm: Switch devices to new system during summer along with testing. Completion by August 2, 2021

Items to complete: CES, BES, HES, BCES, CHHS

- Final punch walks occurred 4.30.21
 - CES occupancy sensor replacement at collaboration room
 - HES light switch needs replacement near projector screen
- Working through HVAC Test and Balance deficiency reports to close out projects at CHHS, BCES, and BES

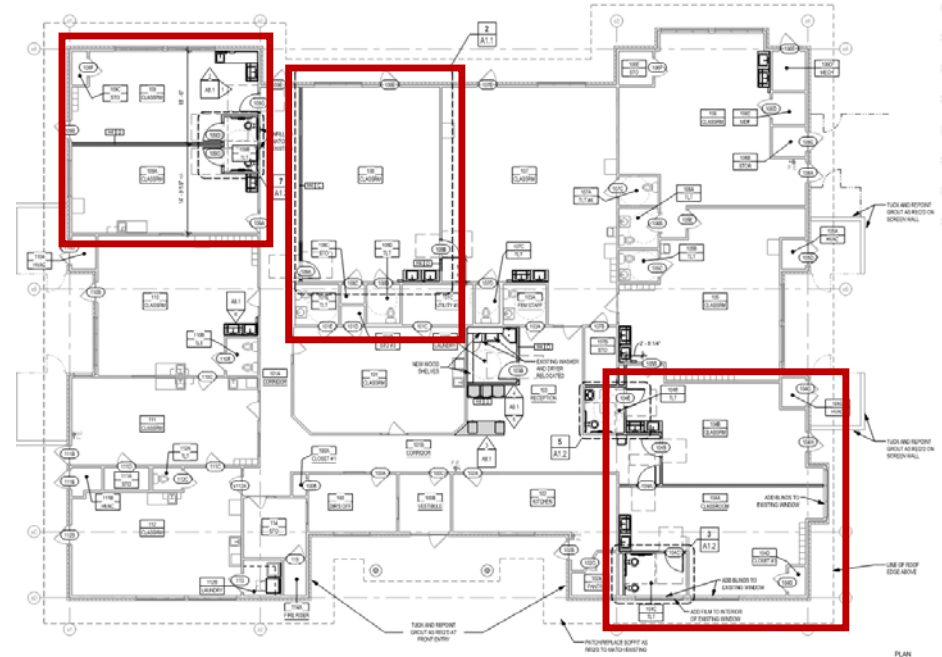


2021 Renovations



- + Permit received, Construction
 - April – July 31, 2021

- + Renovation highlights include:
 - Adding capacity by dividing three existing classrooms
 - New child height accessible sinks at all classrooms
 - Replace 2 water heaters
 - Relocate storage/laundry room
 - Add restrooms at new classrooms
 - Add infrastructure for new video intercom and check-in kiosk
 - New paint throughout
 - New fire alarm equipment; not a full replacement
 - Shop drawings approved by City
 - Rebuild winter storm damage
 - Drywall repair



- + Construction Progress:
 - Exterior concrete has been poured for new ADA parking and ramp at front entry
 - Seal joints at exterior pavement



- + Construction Progress:
 - Interior slab cuts and plumbing have been placed and concrete poured back
 - Drywall has been applied at one wall for inspections. Anticipate finishing with tape and bed next week
 - Electrical rough-in
 - Ducting rough-in



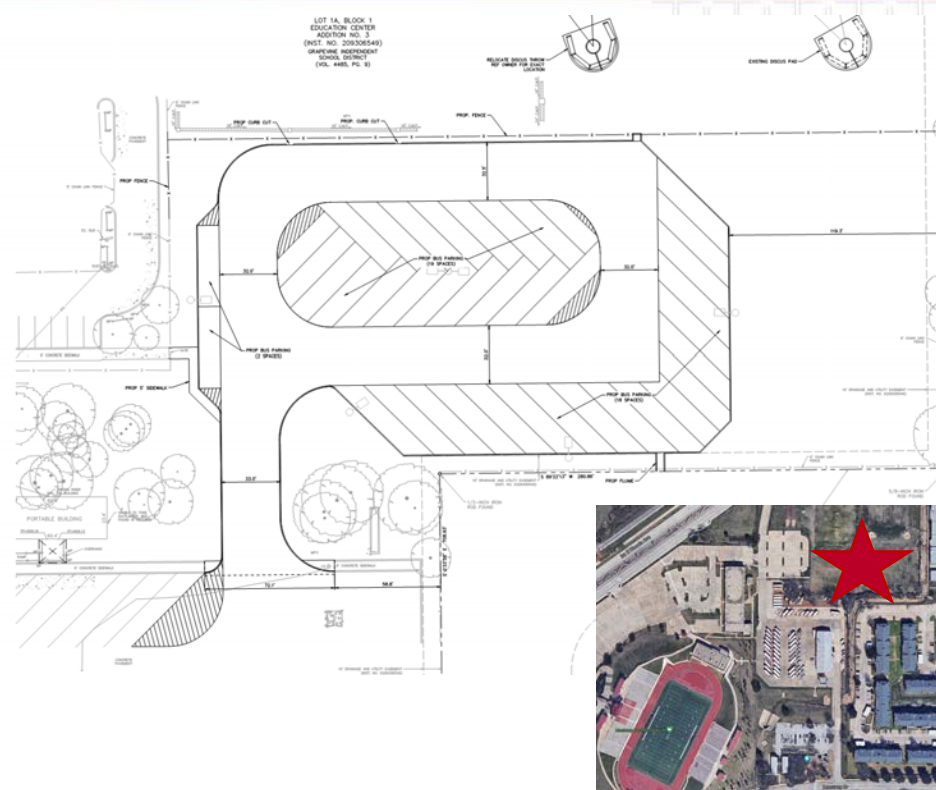


- + Permit received, Construction
 - June – July 31, 2021
- + Renovation highlights include
 - Install classroom door hardware for safety
 - Add infrastructure for new check-in kiosk at Vista
 - Restore ceramic tile flooring in restrooms for Bridges and Vista (large group restrooms)
 - Add occupancy sensors at interior rooms
 - Upgrade intercom system
 - Repair existing exterior drainage
 - Replace parking lot and building mounted light fixtures with LED
 - Add roller shades at windows in Vista



TRANSPORTATION CENTER

- + Currently in City review
 - Awaiting city approval of light fixture placement at new parking lot
 - Permits expected by end of May
- + Construction
 - June – July 31, 2021
- + Project Highlights:
 - Add additional bus parking North of Center
 - Replacing light fixtures in the current parking lot and building mounted fixtures with LED
 - Replace shop lights with LED fixtures
 - Seal concrete joints / cracks
 - Add an awning over propane fueling station
 - Repair main entry gates at North and South



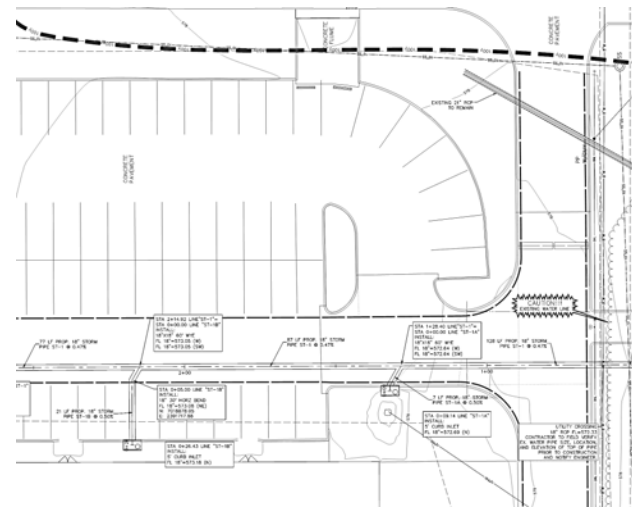
FACILITY / WAREHOUSE

- + Currently in City review
 - Permit received
- + Construction
 - June – July 31, 2021
 - Facility book and records warehouse; September – October 31, 2021
- + Project Highlights:
 - Shop (adjacent to Facility Services)
 - New electrical panels
 - New exhaust fans
 - Replace existing unit heater
 - Facility Services
 - new sprinkler system and suppression system
 - exhaust fans at restrooms
 - replace existing unit heater at plumbing bay
 - Remove wood mezzanine above offices
 - New paint and flooring
 - Video intercom system - by District
 - Book/records Warehouse
 - Remove wood mezzanines and replace with metal
 - Add fire riser and sprinkler
 - Replace unit heater and add new unity heater
 - Large Warehouse (Adjacent to Tech Bldg)
 - Add card reader at loading dock
 - Replace dock pads at one overhead door
 - Replace overhead lights with LED
 - Material Storage (by Facility Services bldg.)
 - Replace perimeter fencing for security



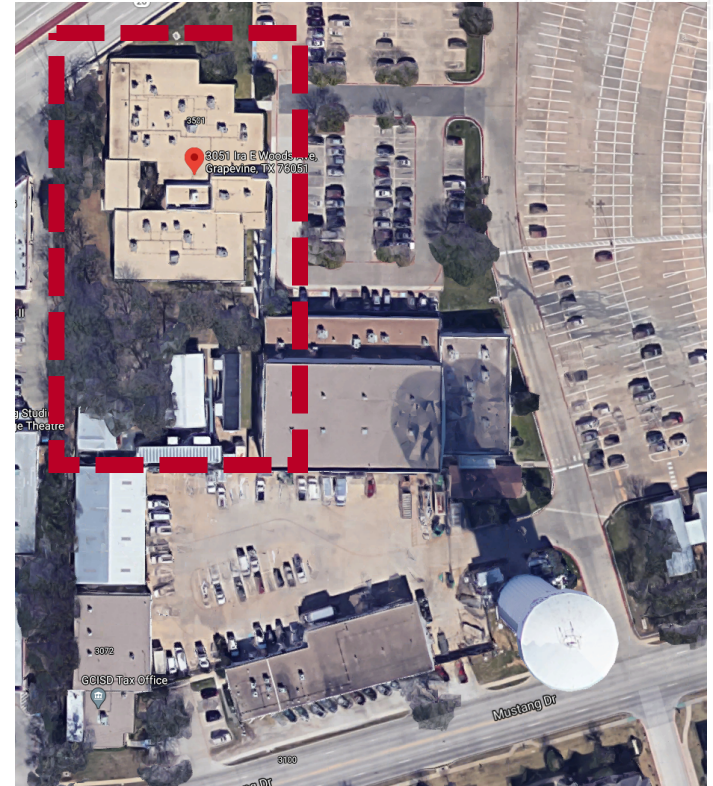
CTMS CREEK DRAINAGE REMEDIATION

- + Currently in City review
 - Permit received
- + Construction
 - June – July 31, 2021
- + Project Highlights:
 - Remove approximately 528 SY of concrete pavement at existing drive at North and East of building and install 5'-0" curb inlets (drains) along existing walk at exterior perimeter of building. Inlets connect to new 18" storm pipe that diverts water to existing creek.
 - Increase size of existing concrete flume/inlet along drive between baseball field and school in order to properly channel water to storm system
 - Replace concrete pavement removed at existing drive around building to allow for proper positive drainage away from building. Install flume with articulated concrete units to help slow the speed of water entering the creek for proper flow rate.



CENTRAL PORTABLE BUILDINGS & WOOD FRAME FACILITY

- + Currently in City review
 - Awaiting permit
- + Construction
 - June – July 31, 2021
- + Project Highlights:
 - Portables (CRC 1-3 and technology)
 - Flooring (carpet at CRC-3)
 - Fire alarm upgrades
 - HVAC updates
 - New ceiling at CRC 2 and Technology
 - Wood Frame Facility
 - New HVAC (split system)
 - New ceiling and lighting
 - Fire alarm upgrades
 - Administration Parking and Driveway
 - Extend underground drainage pipe connection at technology building to main underground storm line near stadium to alleviate ponding and water collection at technology building and overflow at adjacent parking
 - Seal concrete joints / cracks



ACCESSIBILITY AT PLAYGROUNDS

- + Project Highlights:
 - Five (5) schools 2021
 - BCES, BES, GES, HES, OC Taylor
 - Drawings in progress:
 - Civil engineer to conduct ADA site survey and prepare construction drawings for contractor

- + Scope of work: address accessibility pathway to playground areas
 - Concrete walks
 - Joint sealant
 - ramps

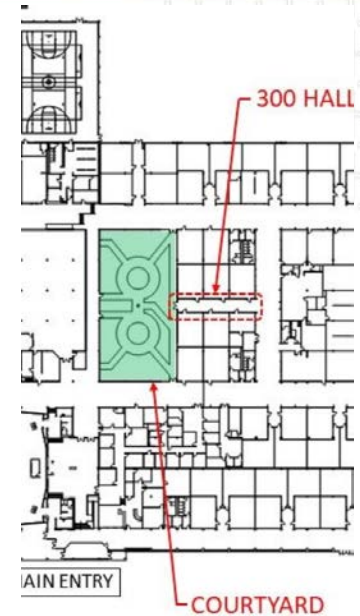
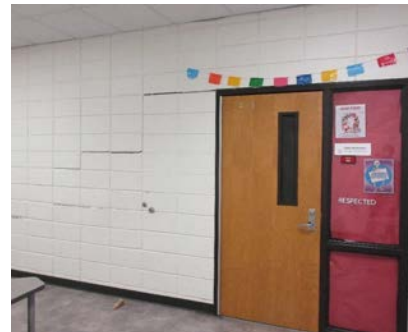
- + Work to be completed throughout 2021 and through January 2022
 - Bransford - issue drawings for permit and bid: May 27, 2021
 - BCES, GES, HES, OC Taylor issue for permit and bid: August 13, 2021



GRAPEVINE HIGH SCHOOL – 300 HALL

+ Project Highlights:

- 1986 non reinforced stack bond CMU wall has shifted due to foundation settling, causing visible cracks that require ongoing maintenance
 - Replace stack bond CMU walls with 6" metal study and gyp board
 - Patch and repair flooring and ceiling tiles
 - Replace electrical outlets and light switches
 - Add sub slab urethane injection to reduce the degree of perceptible un-levelness and facilitate fit-up of wall reconstruction



DISTRICT PROJECTS



- + Project Highlights:
 - Resurfacing tracks and D-areas at secondary school through June
 - Replacing student furniture in science classrooms and fine arts classrooms

DISTRICT PROJECTS

- + HMS Storm Damage work ongoing
 - Tape, bed, paint of walls
 - Install flooring
 - Remove temporary walls week of 5.26.21





Huckabee

MORE THAN ARCHITECTS