



GRAPEVINE – COLLEYVILLE ISD 2016 BOND PROJECT UPDATE

July 25, 2022

Huckabee
MORE THAN ARCHITECTS

2022 Renovations



SYNTHETIC TURF REPLACEMENT



Project Highlights:

- + Work Progress:
 - CHHS & CTMS
 - Projects complete and turned over to the District for use.
 - Mustang Panther Stadium - MPS
 - Correct goal post on order. Will be installed over a break.
 - Existing goal posts will be used until new goal posts are installed
 - Project will be turned over to the District after remaining punch list items are corrected.



Huckabee

ACCESSIBILITY AT PLAYGROUNDS

Project Highlights:

- + Three schools with civil work (DES, GHES & SLES)
- + Scope of work: address accessibility pathway to playground receiving new equipment
- + Work Progress:
 - Concrete work complete except at SLES
 - Handrail installation ongoing
 - Final cleaning ongoing
 - Crosswalk painting ongoing
- + 1 week look ahead:
 - ADA inspection



Huckabee

MULTI-CAMPUS FINISHES



Project Highlights:

- + 9 campuses
 - BES, CES, DES, GHES, OCTES, SLES, CMS, GMS, GHS
- + Work Progress:
 - BES - Complete
 - CES - Complete
 - CMS – Carpet and SVT install ongoing. Concession stand painted. 2nd floor finishes ongoing
 - GHES – Carpet received and install ongoing. All SVT installed
 - GHS – Interior Complete. Technology and furniture moved back. Exterior painting ongoing
 - GMS – Complete
 - OCT – Complete
 - SLES – Complete
- + 1 week look ahead:
 - Complete remaining schools
 - Complete punch lists

Huckabee

MULTI-CAMPUS FINISHES



Classroom



Corridor

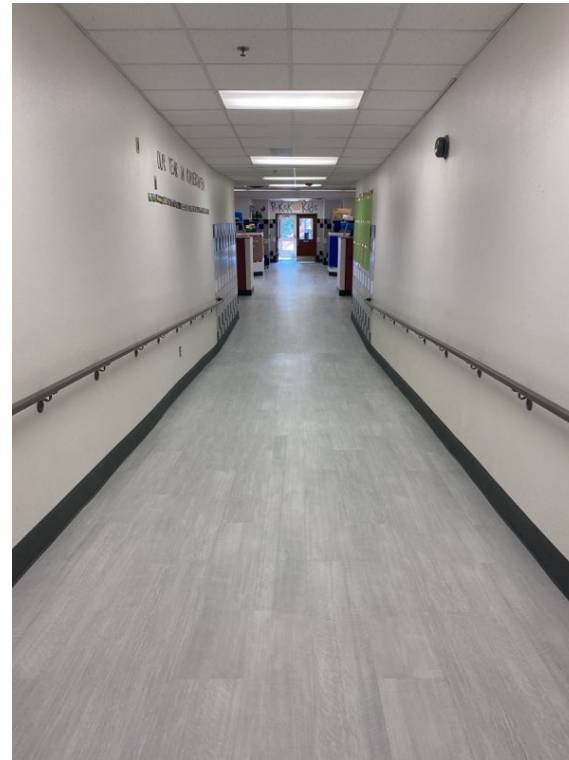
Dove Elementary School

Huckabee

MULTI-CAMPUS FINISHES



Hallway F Looking East



Hallway F Looking West

Dove Elementary School

Huckabee

MULTI-CAMPUS FINISHES



Science Classroom



Corridor

Colleyville Middle School

Huckabee

MULTI-CAMPUS FINISHES



Gym



Science Classroom

Colleyville Middle School

Huckabee

MULTI-CAMPUS FINISHES



Exterior



Gym

Grapevine High School

Huckabee

MULTI-CAMPUS FINISHES



Choir



Band

Grapevine High School

Huckabee

2022 HVAC REPLACEMENT



Project Highlights:

- + Replace identified HVAC rooftop units at 4 campuses:
 - CES (7/29/22 units arrive on site)
 - Front Offices
 - Café (2 units)
 - Gym (2 units)
 - DES (7/24/22 units arrive on site)
 - Library
 - Gym
 - SLES (Units being installed)
 - Gym
 - Café (2 Units)
 - Library
 - CMS (All but 1 unit delivered)
 - Administration
 - Learning Commons
 - Gym (2 units)
 - Choir Room
 - Band 1

+ Work Progress:

- Roof curb installation ongoing
- HVAC unit installation ongoing

Huckabee



Huckabee
MORE THAN ARCHITECTS