



GRAPEVINE – COLLEYVILLE ISD 2016 BOND & TIF PROJECT UPDATE

September 28, 2020

Huckabee
MORE THAN ARCHITECTS

2020 RENOVATIONS

ELEMENTARY SCHOOLS & CHHS

CES, HES, BCES, BES - CHHS

BCES

- Campus office access control is complete, including the door that leads into the controlled area
- At the vestibule, cabling test results were approved by engineer. Remaining: Programming video intercom devices and a couple of hardware devices to electrify access control system. District will begin installing the check-in kiosks and training personnel.
- Campus received the learning commons as of Monday, September 14th
- The open powder coated grid will be installed in the ceiling over the tech hub station mid-October
- Projector will be installed once the open grid ceiling is installed
- HVAC controls are still to be completed
- Door hardware still to be completed

ELEMENTARY SCHOOLS & CHHS

CES, HES, BCES, BES - CHHS

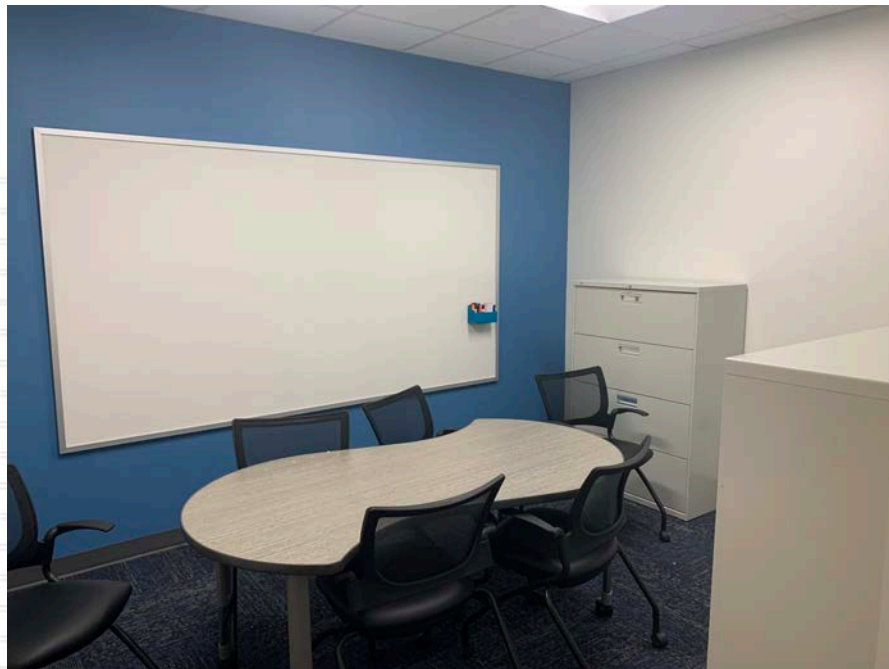
BCES



ELEMENTARY SCHOOLS & CHHS

CES, HES, BCES, BES - CHHS

BCES



ELEMENTARY SCHOOLS & CHHS

CES, HES, BCES, BES - CHHS

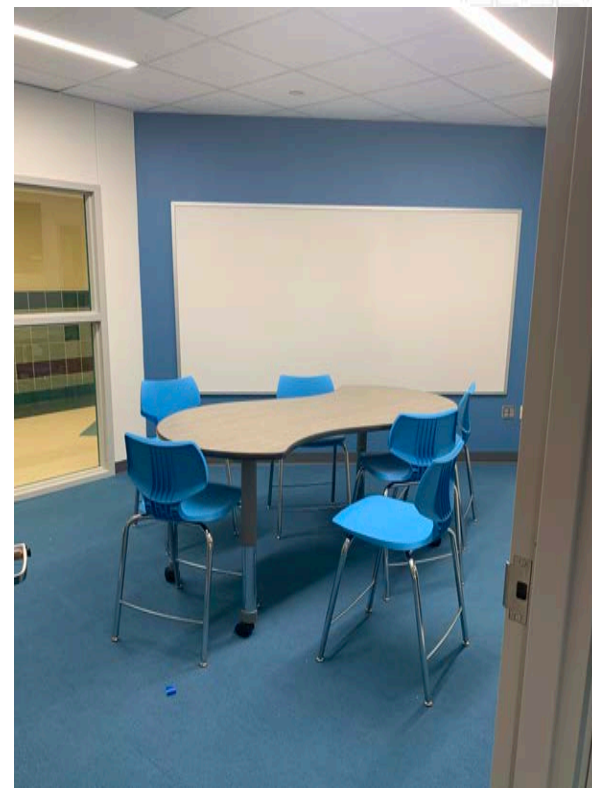
BCES



ELEMENTARY SCHOOLS & CHHS

CES, HES, BCES, BES - CHHS

BCES



ELEMENTARY SCHOOLS & CHHS

CES, HES, BCES, BES - CHHS

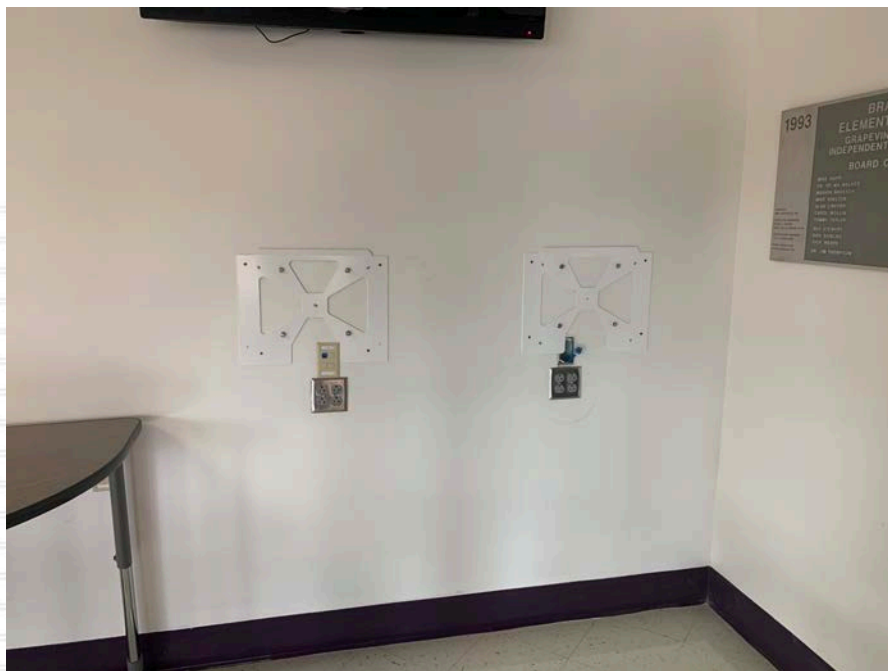
BES

- Campus office access control is complete, including the back doors behind the reception desk and doors leading in and out of the office
- At the vestibule, cabling test results were approved by engineer
- Remaining: Two hardware items regarding Request to Exit functions and a couple of hardware items to electrify the entire access control system
- The learning common was turned over to the campus as of Monday, September 14
- Final lighting is being installed over the tech hub station
- Blinds will be installed at exterior doors of the learning commons
- The open powder coated grid will be installed mid-October over the tech hub station

ELEMENTARY SCHOOLS & CHHS

CES, HES, BCES, BES - CHHS

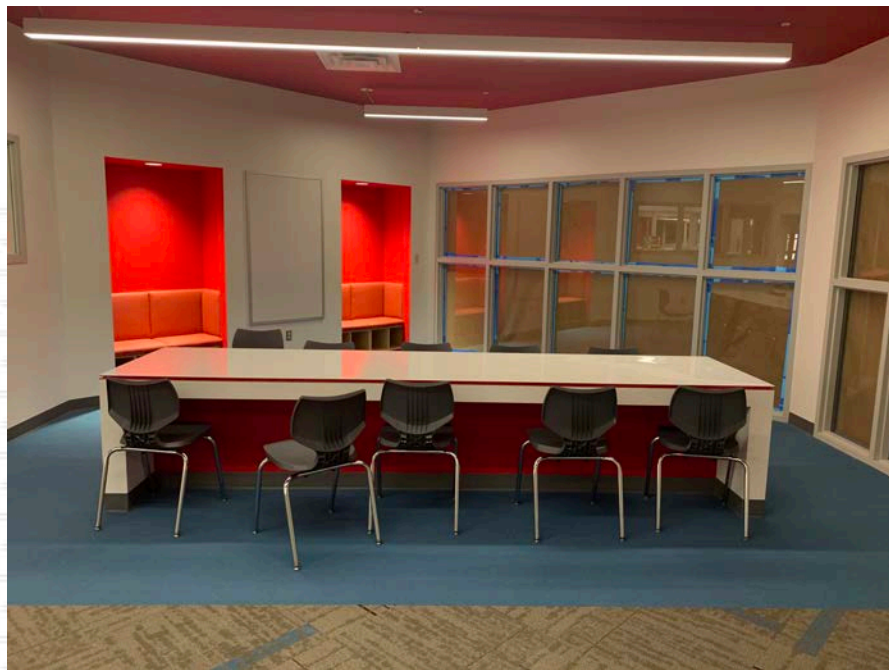
BES



ELEMENTARY SCHOOLS & CHHS

CES, HES, BCES, BES - CHHS

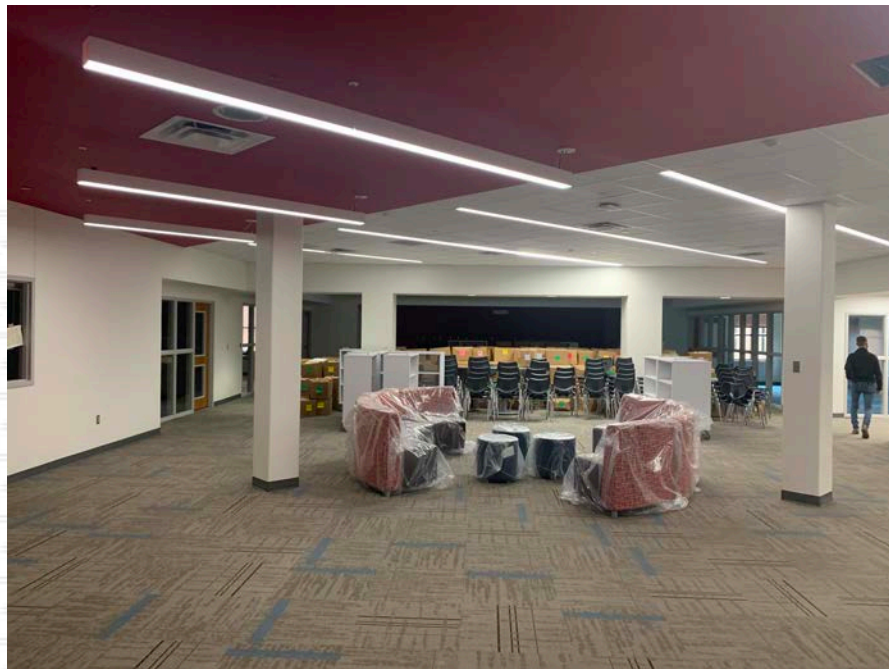
BES



ELEMENTARY SCHOOLS & CHHS

CES, HES, BCES, BES - CHHS

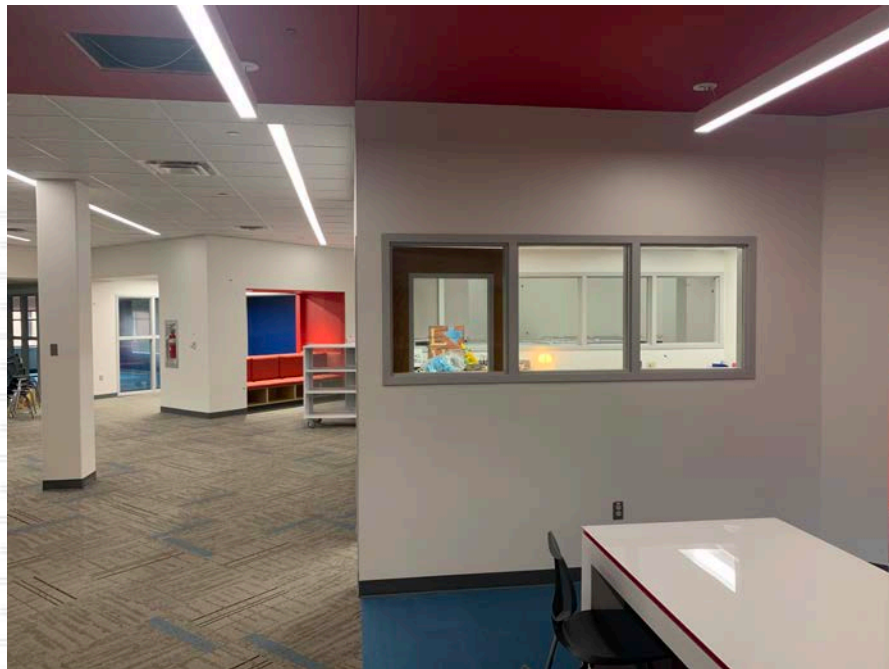
BES



ELEMENTARY SCHOOLS & CHHS

CES, HES, BCES, BES - CHHS

BES



ELEMENTARY SCHOOLS & CHHS

CES, HES, BCES, BES - CHHS

HES

- Campus office access control is complete, including the back doors behind the reception desk and doors leading in and out of the office
- At the vestibule, cabling test results were approved by engineer
- Data and power have been run to the location for kiosks
- Remaining: Two hardware items regarding Request to Exit functions and a couple of hardware items to electrify the entire access control system
- The learning common was turned over to the campus as of Monday, September 14th
- The gym air handler and condensing unit will be tentatively installed the weekend of Oct. 12th as it is a long weekend for the district
- The open powder coated grid will be installed mid-October over the tech hub station

ELEMENTARY SCHOOLS & CHHS

CES, HES, BCES, BES - CHHS

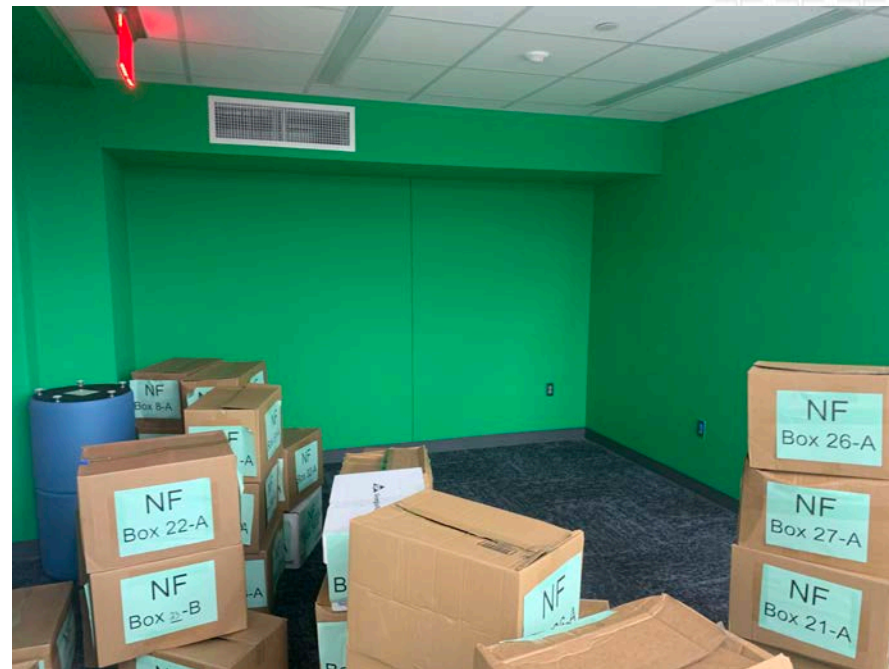
HES



ELEMENTARY SCHOOLS & CHHS

CES, HES, BCES, BES - CHHS

HES



ELEMENTARY SCHOOLS & CHHS

CES, HES, BCES, BES - CHHS

HES



ELEMENTARY SCHOOLS & CHHS

CES, HES, BCES, BES - CHHS

HES



ELEMENTARY SCHOOLS & CHHS

CES, HES, BCES, BES - CHHS

CES

- Finalizing hardware at administrative area
- New access control on doors in the administrative area to follow hardware
- Power and data are ready for the kiosks. District to begin installation and programming kiosks
- Power to the roller shades in the commons area is complete
- District began to move-in to the learning commons last week

ELEMENTARY SCHOOLS & CHHS

CES, HES, BCES, BES - CHHS

CES



ELEMENTARY SCHOOLS & CHHS

CES, HES, BCES, BES - CHHS

CES



ELEMENTARY SCHOOLS & CHHS

CES, HES, BCES, BES - CHHS

CES





CHHS

- Knox Boxes (large format) have been installed per the AHJ (Building Official)
- Video intercom and card reader are operational at the vestibule
- Temporary doors currently at the main entry vestibule, the new doors will arrive the first of October
- Roller shades were installed on 9/22
- In the auditorium, the new ceiling mounted fixtures have been installed. Ceiling has been patched and is being painted. The new AV system installation will begin next week.
- New PA system will be operational early next week. Existing PA will be turned over in phases to ensure redundancy until it's all complete and tested
- New Fire Alarm Voice EVAC is being finalized with the city, and installation will begin next month
- Replacing the baseball fence will begin mid-November

CHHS

FINISHES – FLOORING - FURNITURE



CHHS



Huckabee

CHHS

FINISHES – FLOORING - FURNITURE



CHHS



Huckabee

CHHS

FINISHES – FLOORING - FURNITURE



CHHS



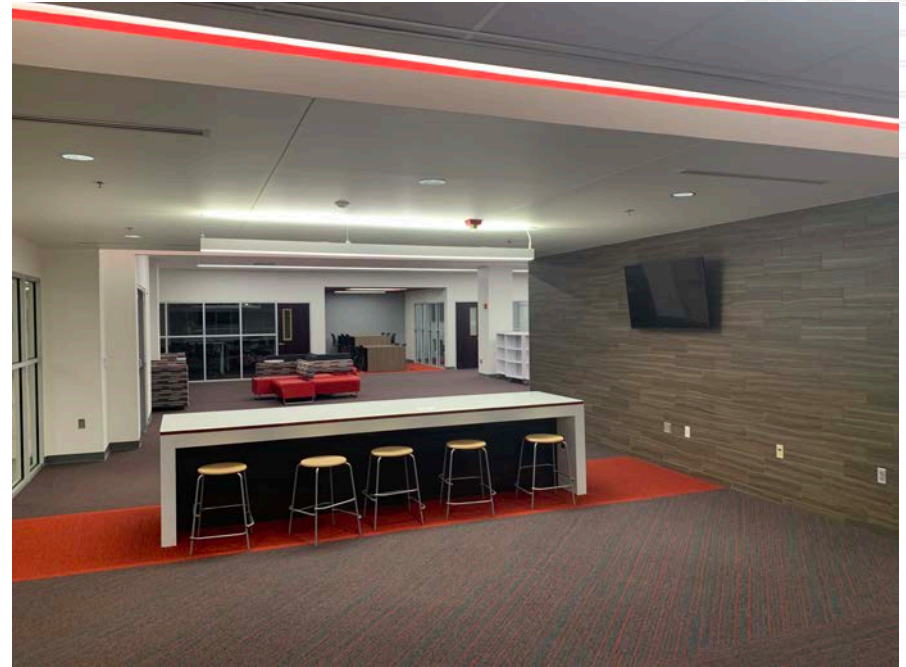
Huckabee

CHHS

ENTRANCE VESTIBULE



CHHS

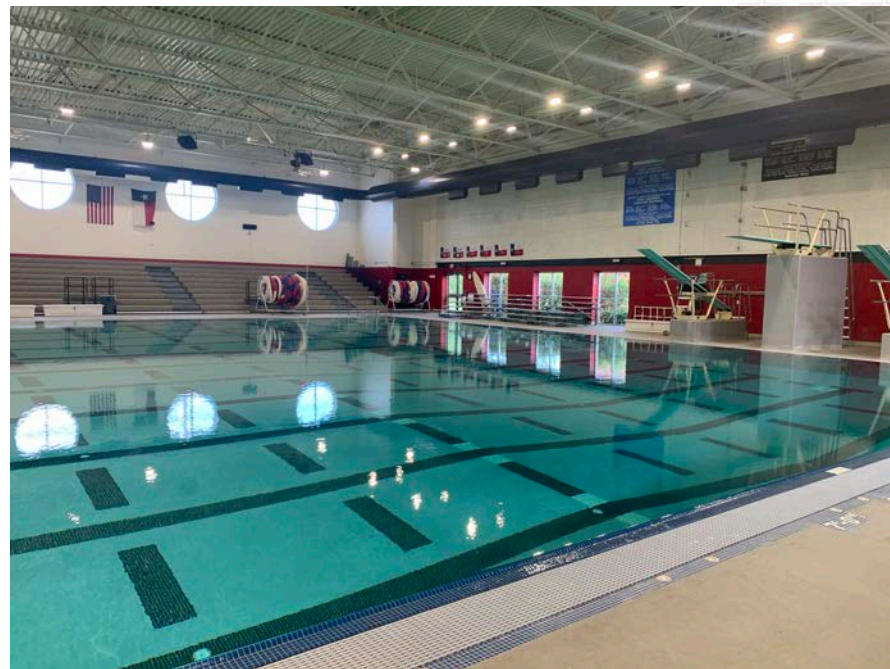
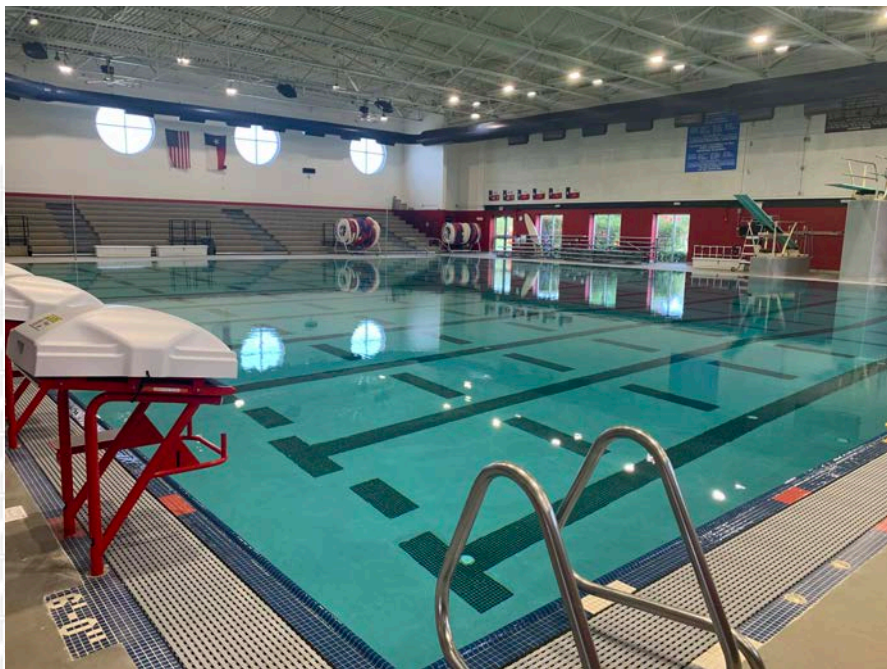


Huckabee

- Glass and glazing replacement has been completed on 4 exterior windows
- Locker installation is complete in the boy's and girl's locker rooms
- Timing system has been installed
- Rooftop units are operational
- Architect interior punch list is currently being addressed by LLCI
- Engineering punch lists have been completed
- District contractor is installing the new fire alarm system

SWIM CENTER

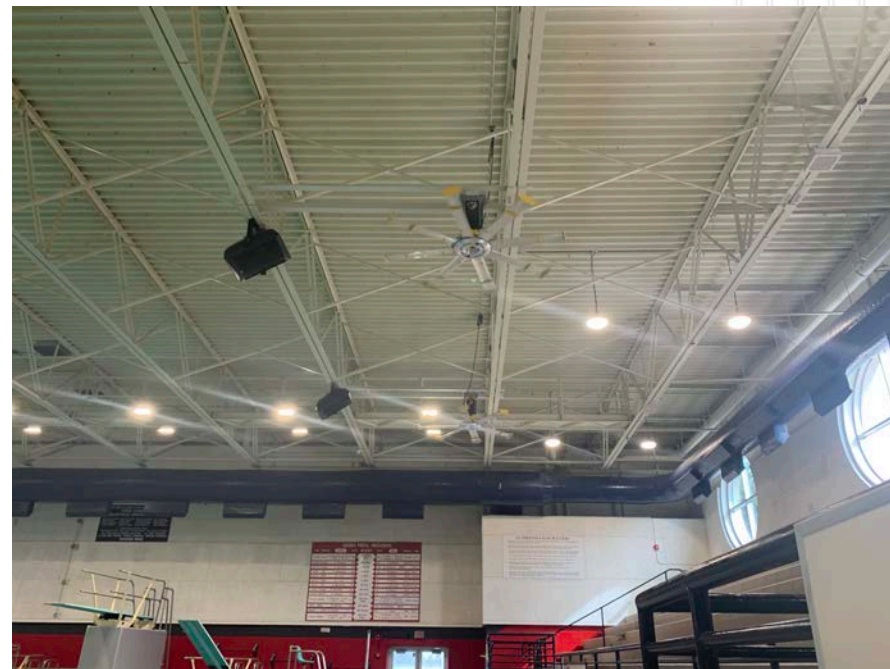
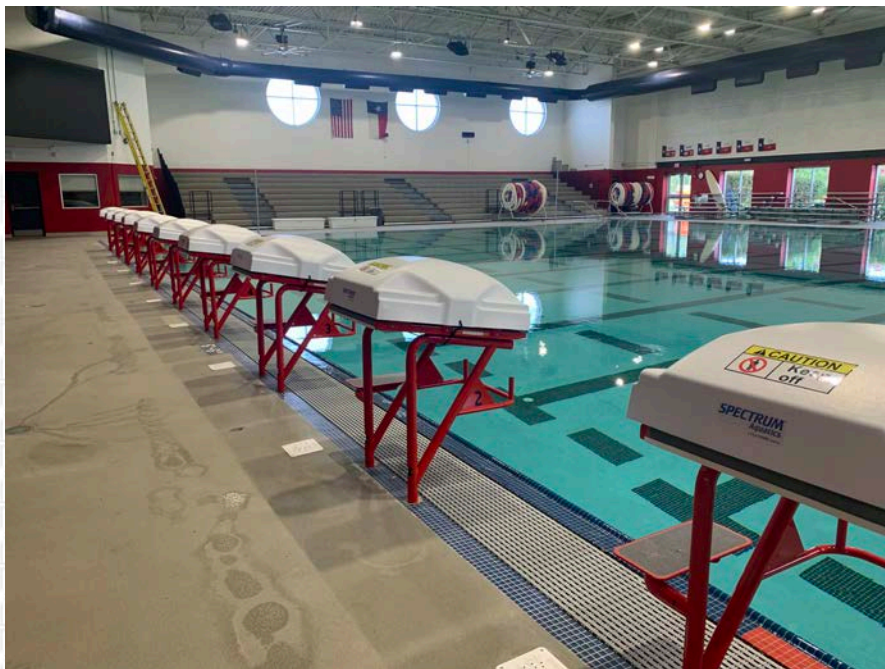
HVAC EQUIPMENT INSTALL



Huckabee

SWIM CENTER

HVAC EQUIPMENT INSTALL



SWIM CENTER

STARTING BLOCKS AND POOL FINISHES



GCISD PROJECTS

ADMINISTRATION RENOVATION

UPDATE

- Interior punch list is complete
- Exterior flume is complete, running the existing storm drain system now
- Exterior rock/ground covering is complete
- Exterior roof drains on west side (facing Hwy 26) have been tied in subsurface to the existing storm to help with volume of runoff during rain events
- Exterior steps leading up west side of building have been corrected
- Exterior landscaping has been completed around the building
- Exterior grade beams are complete including water proofing, helping create a barrier from heavy rain events

ADMINISTRATION RENOVATION

FINAL GRADING & COURTYARD LANDSCAPING



ADMINISTRATION RENOVATION

FINAL GRADING & COURTYARD LANDSCAPING



ADMINISTRATION RENOVATION

FINAL GRADING & COURTYARD LANDSCAPING



ADMINISTRATION RENOVATION

FINAL GRADING & COURTYARD LANDSCAPING



MP STADIUM

GALVANIZED BEAMS



MP STADIUM

GALVANIZED BEAMS



BCES DRAINAGE CHANNEL STUDY WORK



- Geotech recommends over excavation and compaction of area; and or use of flowable fill
- There is also mention to replace concrete panels at channel sides that are compromised
- The design phase will take until mid-November to prepare for City submission/review
- This is outside of 2016 bond scope

2021 PROJECTS

Schedule:

100% DD Progress Review Set: September 19th

30% CD Turn in: October 19th

LLCI Pricing Due: November 9th

LLCI / Huckabee/ GCISD 100% Cost Review Meeting: November 12th

90% CD Turn in: December 1st

LLCI Pricing Due: December 22nd (Estimated)

Sign and Seal: January 18th, 2021

GMP Proposals Due: February 8th

GMP Board Approval: February 22, 2021



Huckabee

MORE THAN ARCHITECTS